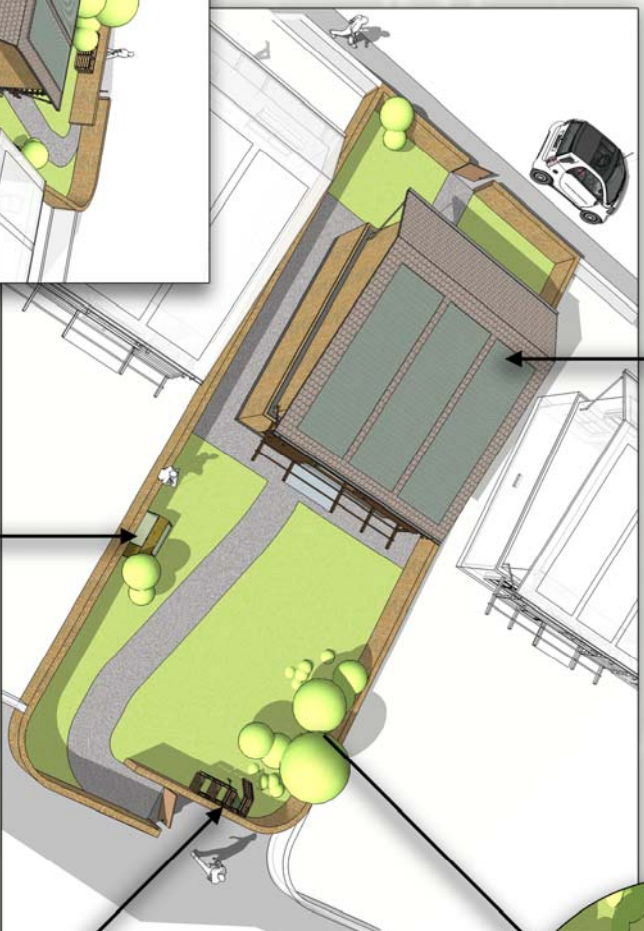


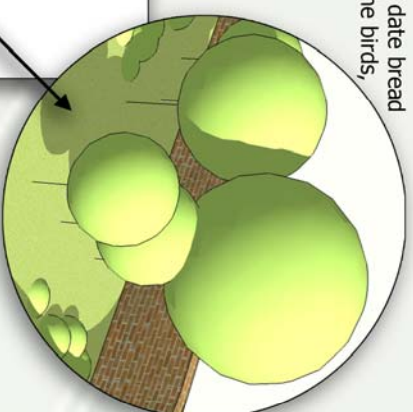
Windows - 'triple glazed windows with big gaps.'



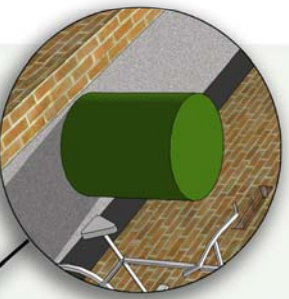
Heating - 'To heat my water, I am going to pump it through the solar panels so the sun will heat it up.'



Nature area - 'Even old, out of date bread will not be wasted. Give it to the birds, they'll love it!'



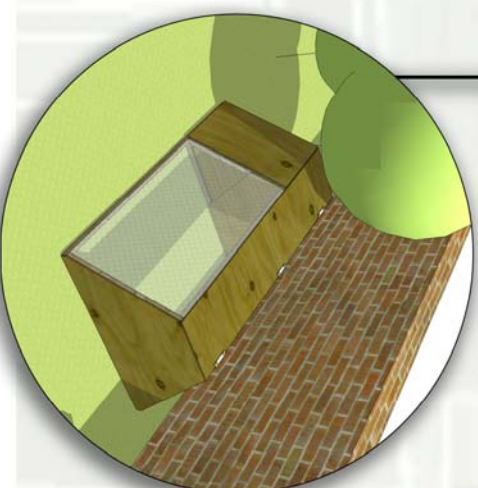
external features.



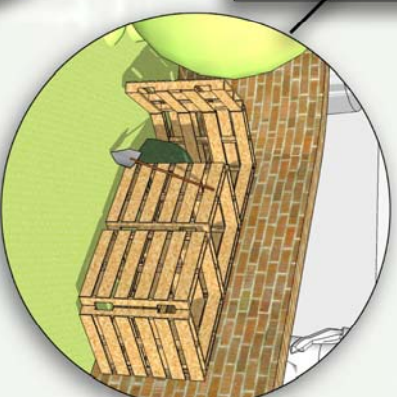
Water butt - 'water butt to collect rain water to be used to wash the windows and the one or maybe two cars.'



plans.



Compost heap - 'Use the soil (that all the mouldy fruit and vegetables rotted down to) to put on your plants. They will grow so fast they will be up before you can say "ecologically friendly!"'



Rabbit - 'Don't waste your old lettuce, potato peelings and all that stuff - rabbits and guinea pigs like them and they're also great company!'

Matrix
housing partnership



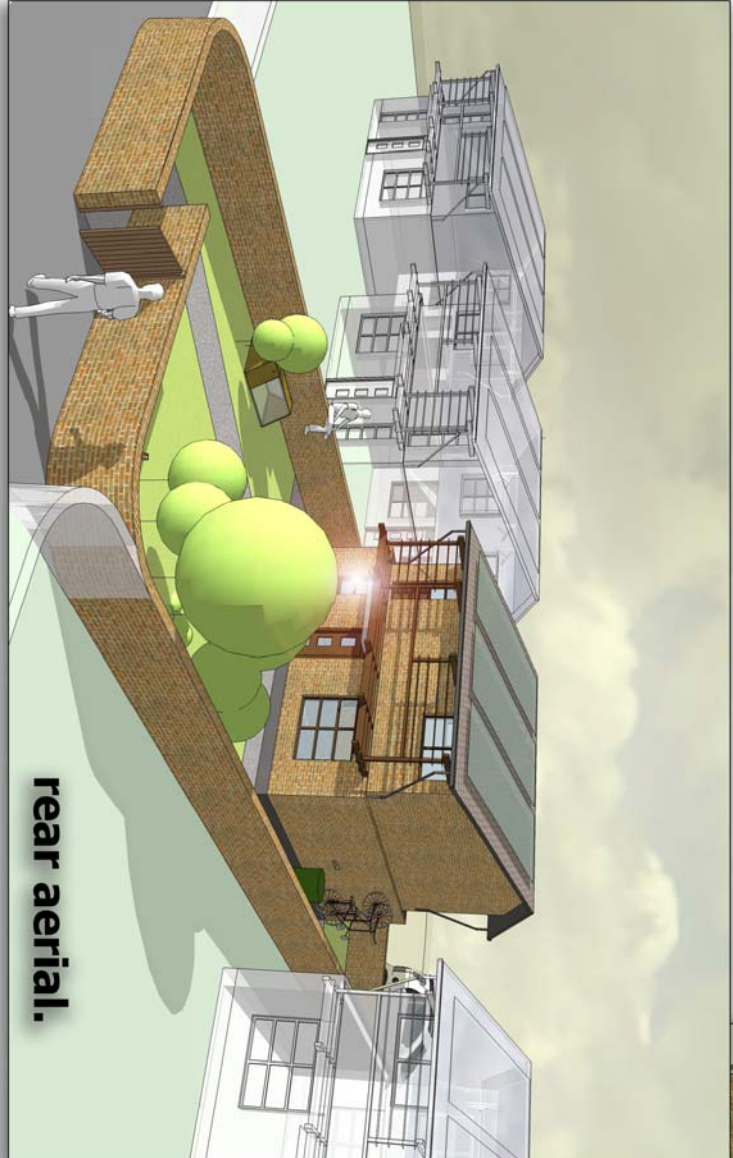
indesign.

images.

rear elevation.



front elevation.



rear aerial.

Matrix
housing partnership



indesign.

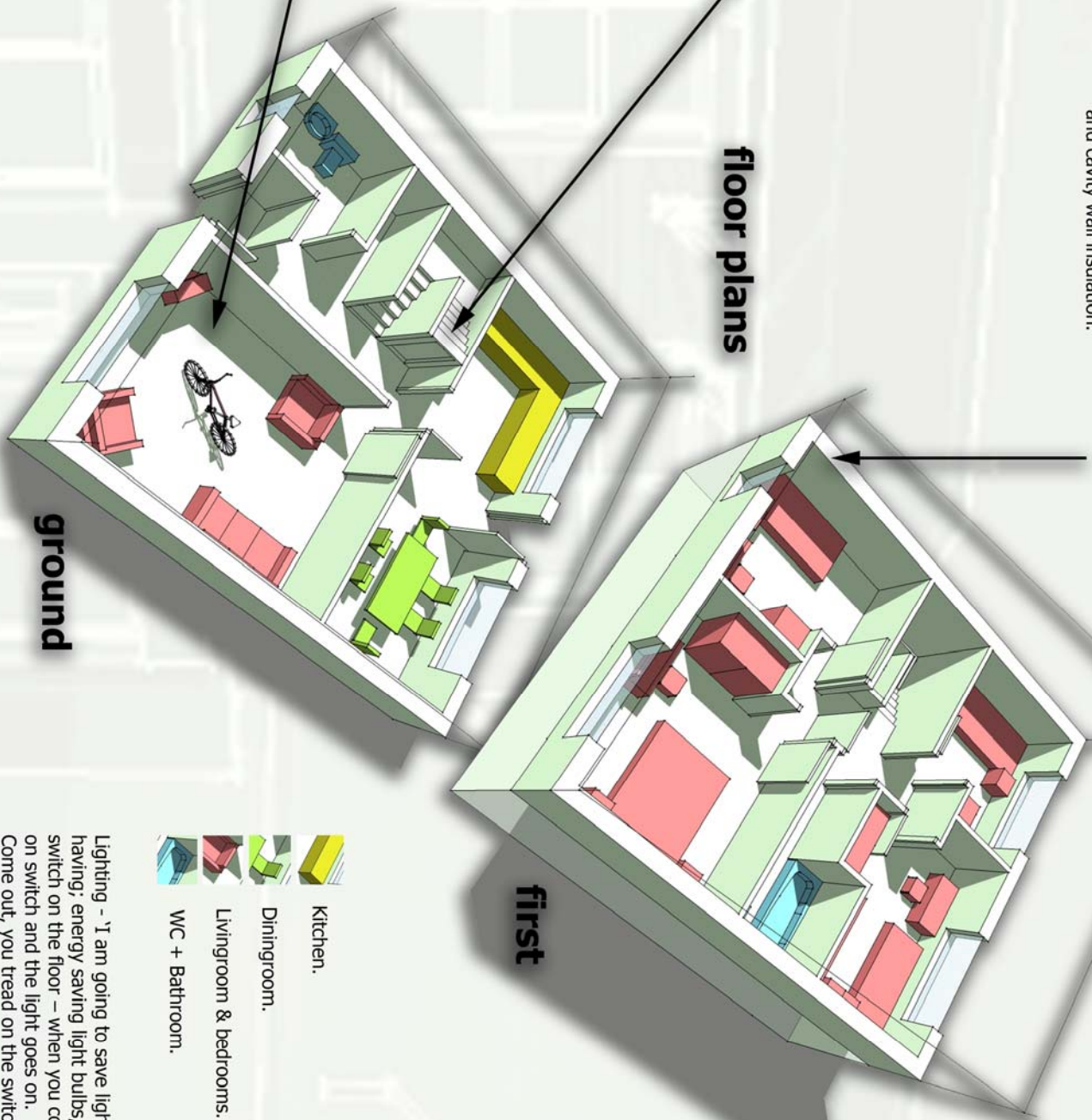
internal features.

Insulation - 'I am going to have loft insulation and cavity wall insulation.'




Heating - 'To heat my water, I am going to pump it through the solar panels so the sun will heat it up. Also to heat my water, for example, your cold water is coming in at 0 degrees, your boiler needs to heat it up (use enough Gas) to 45 degrees.'

'If you wrap your hot pipes from your clothes and dish washers round your cold pipe, it will heat it up, to lets say 35 degrees, so your boiler only has to use up enough gas to heat up 10 degrees not 45 degrees!'

floor plans



Energy - 'To power my TV I'm going to attach the TV to a generator and the generator to an exercise bike. If you can't be bothered to cycle enough to power your television, you obviously can't be bothered to watch it!'

-  Kitchen.
-  Diningroom.
-  Livingroom & bedrooms.
-  WC + Bathroom.

Lighting - 'I am going to save light/energy by having; energy saving light bulbs, a big light switch on the floor - when you come in tread on switch and the light goes on. Come out, you tread on the switch again and the light goes off.'

Signage - 'Signs saying "Do you really need this light on?" or "It can't be that dark," etc.'